

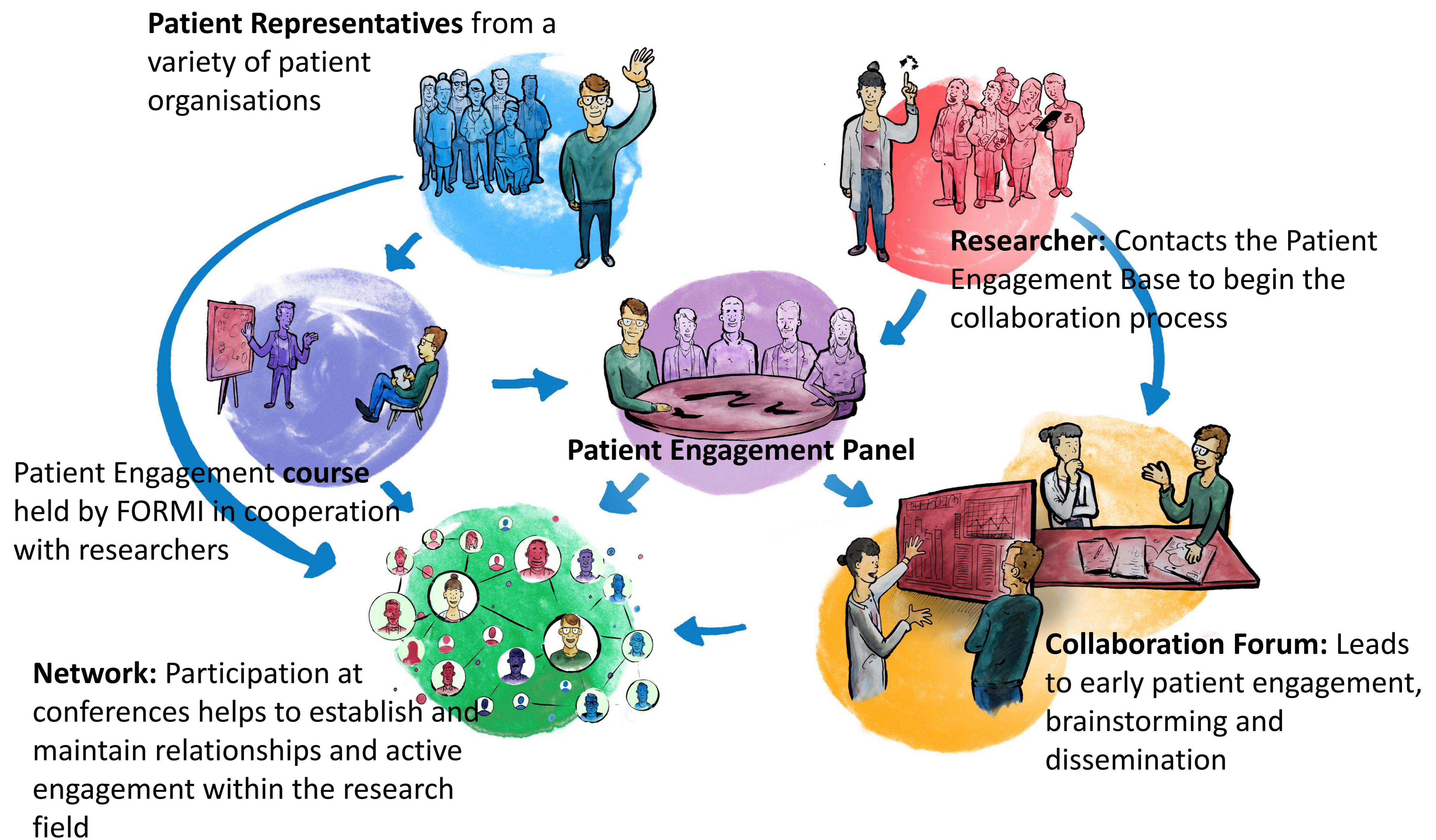
FORMI Patient Engagement Panel

Together for quality and relevant research

Research and Communication Unit for Musculoskeletal Health (FORMI)

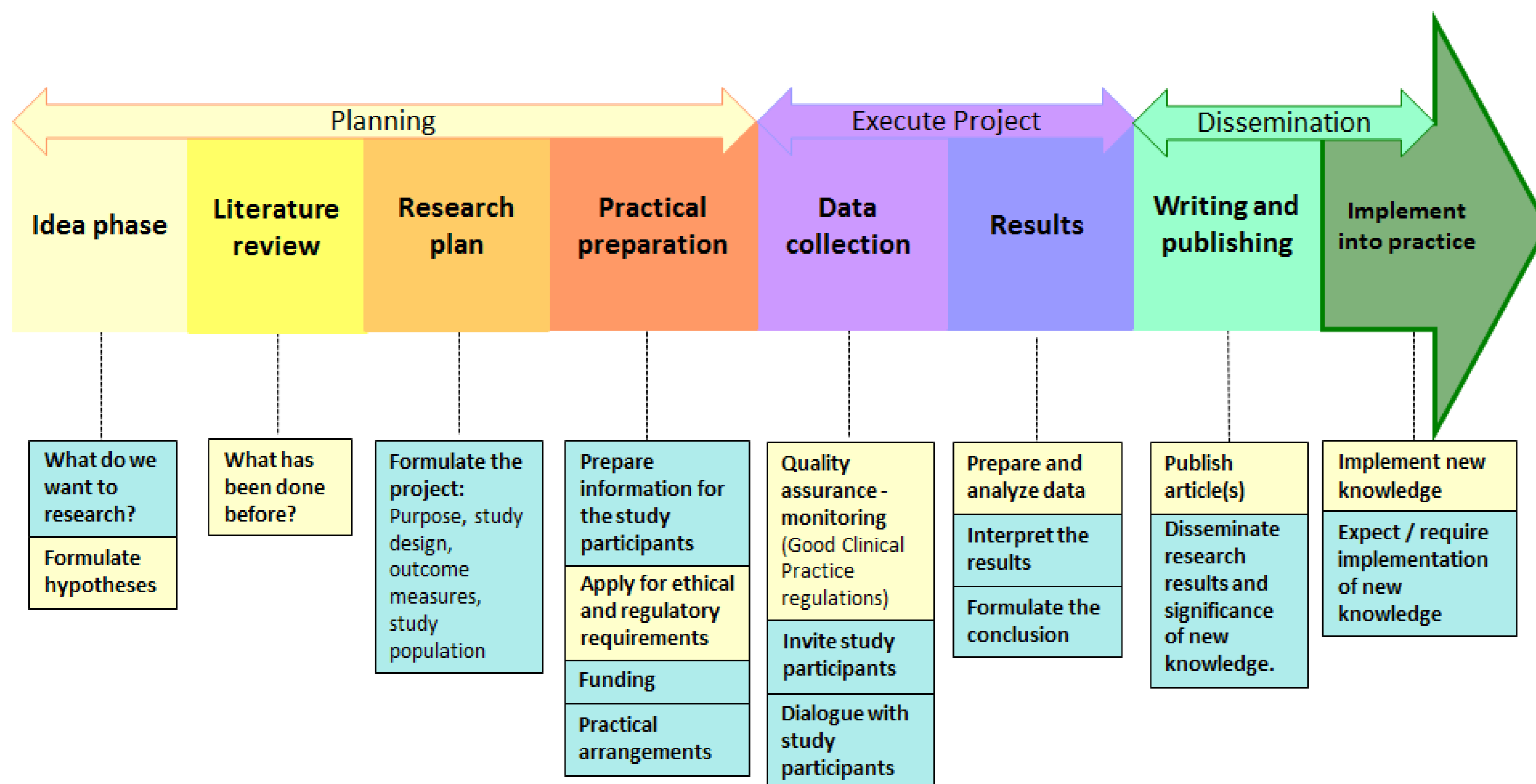
Why is user participation important to research?

Patient engagement improves the quality and relevance of health research. Research results have greater importance and are implemented more quickly when they are relevant to both patients and caregivers. Patient engagement contributes to the democratization of health research, and helps to ensure that users' perspectives, needs and experiences are reflected to a greater extent. Therefore, FORMI established the user participation panel in 2017. This is in line with the Oslo University Hospital (OUS) Research Strategy 2016-2020¹, as well as several national strategies, such as HelseOmsorg 21.²



The FORMI Patient Engagement Panel consists of committed and trained representatives from a variety of user organizations. The panel participates in research projects and collaboration forums alongside researchers, leading to early patient engagement in research. In addition, the panel contributes to the effective dissemination of popular science articles and information materials.

Patient Engagement in Research



The **research arrow for user participation** is intended as an aid for planning and implementing user participation in research. Developed by FORMI, OUS base on material from EUPATI. (EUPATI used under CC BY-NC-SA 4.0)

Demands high medical / researcher competence (Yellow) Well suited for user participation (Blue)

FORMI Patient Engagement Panel:

- Experienced patient representatives on hand to assist researchers.
- Contributes to effective and high quality patient engagement.
- Contributes with broad user experience.
- Enables engagement in the idea phase of research projects.
- Helps to clarify priority areas for future research.
- Streamlines the dissemination of results.

Patient Engagement leads to:

- Impact
- Development
- Change
- Collaboration

1. (Vedtatt 17. desember 2012). Strategi for brukermedvirkning 2016 2020, Seksjon for pasient- og pårørendeopplæring og Brukerutvalget Stab samhandling og internasjonalt samarbeid, Oslo universitetssykehus.

2. Regjeringa sin handlingsplan for oppfølging av HelseOmsorg21-strategien, Forsking og innovasjon i helse og omsorg (2015–2018). H.-o. omsorgsdepartementet.

3. Brukermedvirkning I Forskning" is a derivative of "Patient involvement in R&D" by EUPATI used under CC BY-NC-SA 4.0